



# INM - EXPLAIN

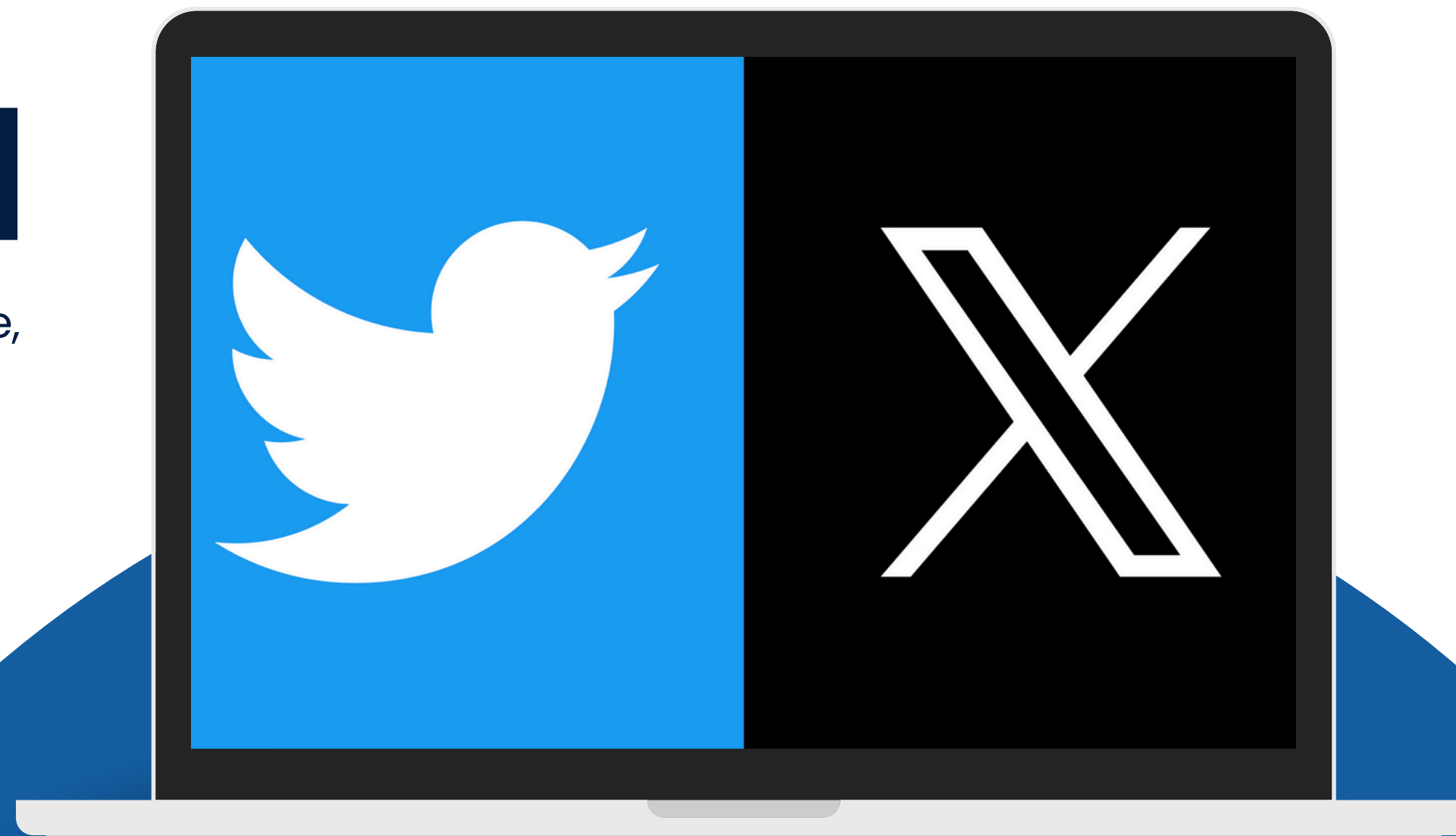
J. Duckes, A. Girondin, M. Maïo, H. Sayah, [A. Zouzou](#), S. Benslimane,  
J. Azé, S. Bringay, C. Mollevi, M. Servajean



LIRMM



janssen  
Horizon



# INTRODUCTION

- Academic Project - Master MIASHS
- Continuation of S.Benslimane's thesis work on the controversy - Deep Learning and Graphs to produce a controversy score
- **Our mission** : To create simple visualizations to understand the controversy
- **Case study** : INM (Non-Pharmaceutical Interventions), a highly controversial topic

# INTRODUCTION



Cannabis kills cancer. Medical marijuana is chemotherapy, natural style, for all cancer patients. The two forms of hemp oil, one with THC and CBD and the other CBD alone (which is pretty much legal everywhere) provide the body with chemo therapeutics without the danger and staggering side effects. The United States government is pathetic in its dishonesty about medical marijuana both believing in it and holding patents for its medical use and claiming at the same time that it has no medical use. The federal government and still many states would rather throw innocent people in jail for using medical marijuana than be honest about how much it can help people recover from cancer and other diseases. [drsircus.com/medical-mariju...](https://drsircus.com/medical-mariju...)

[#cancer](#)  
[#cannabis](#)

6:10 AM · May 9, 2024 · 396 Views

230 1202 7320

- **The Controversy** : A reasoned discussion, a dispute over an opinion, [...] encompassing the divergent or contradictory elements of the debate. (National Center for Textual and Lexical Resources)
- **Non-Medical Interventions (INM)**: Non-invasive and non-pharmacological interventions on human health based on science. (CEPS Platform)

# INTRODUCTION



Cannabis kills cancer. Medical marijuana is chemotherapy, natural style, for all cancer patients. The two forms of hemp oil, one with THC and CBD and the other CBD alone (which is pretty much legal everywhere) provide the body with chemo therapeutics without the danger and staggering side effects. The United States government is pathetic in its dishonesty about medical marijuana both believing in it and holding patents for its medical use and claiming at the same time that it has no medical use. The federal government and still many states would rather throw innocent people in jail for using medical marijuana than be honest about how much it can help people recover from cancer and other diseases. [drsircus.com/medical-mariju...](https://drsircus.com/medical-mariju...)

[#cancer](#)

[#cannabis](#)

6:10 AM · May 9, 2024 · 396 Views



230



1202



7320



**How can data visualizations contribute to a better understanding of the factors behind controversies on Twitter?**





# #Summary

▶▶▶	Data Processing	2
▶▶▶	Developed Visualizations	3
▶▶▶	Where to find our results ?	11
▶▶▶	Discussions and Perspectives	12
▶▶▶	Conclusion	13





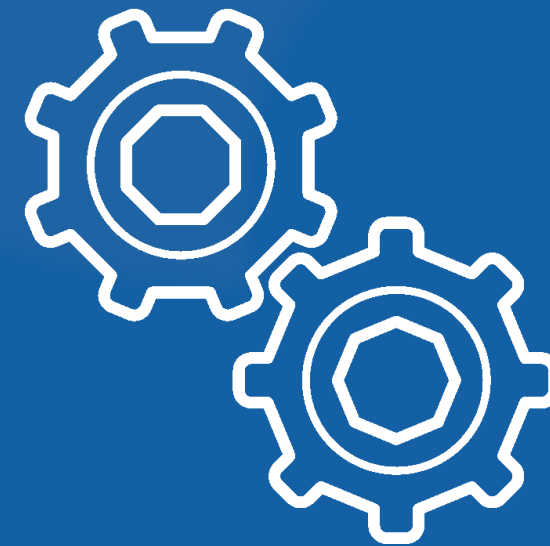
**What are our  
Data ?**

# Data Processing



**INM**

**Tweets : 52 920**  
**Likes : 7 209 886**  
**Retweets : 2 048 663**  
**Responses : 623 221**  
**Citations : 280 448**



## **Data Processing**

- **Tokenization**
- **Hashtags Retrieval**
- **Users Removal**



- **LDA**
- **Clustering and Community Detection**
- **Sentiment Analysis**
- **Opinion Classification**
- **Controversy index**

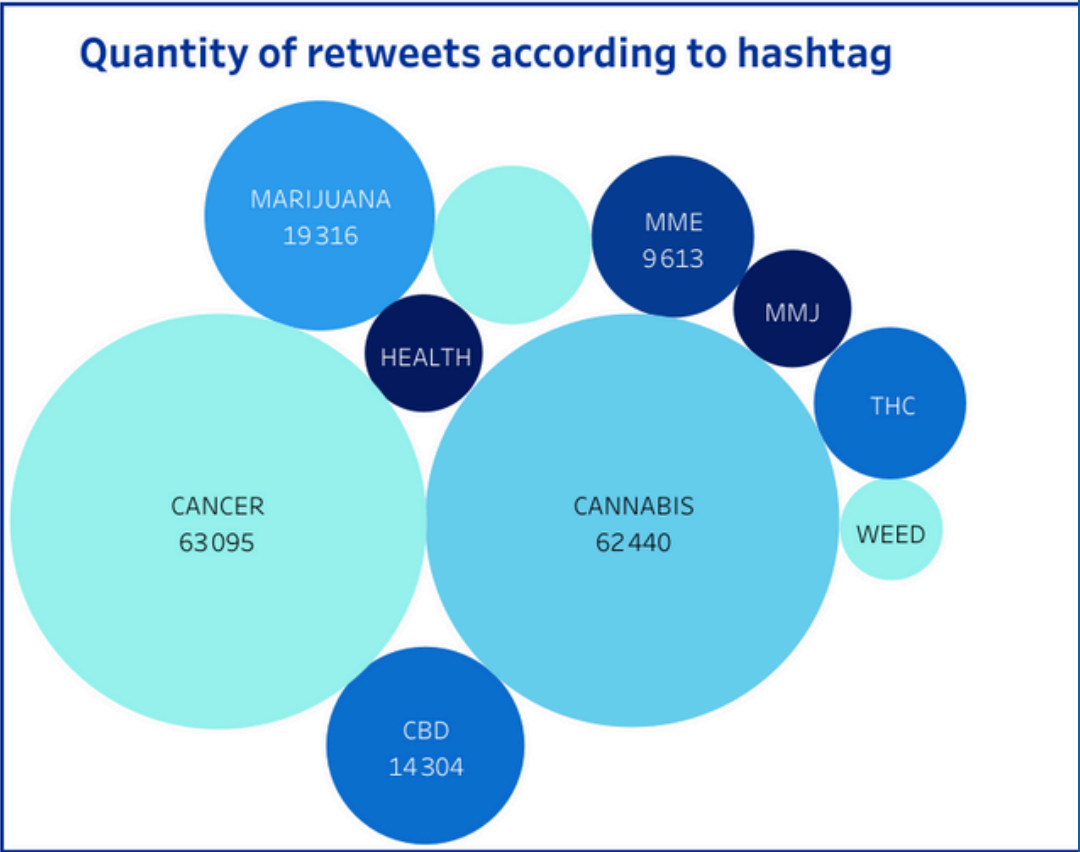
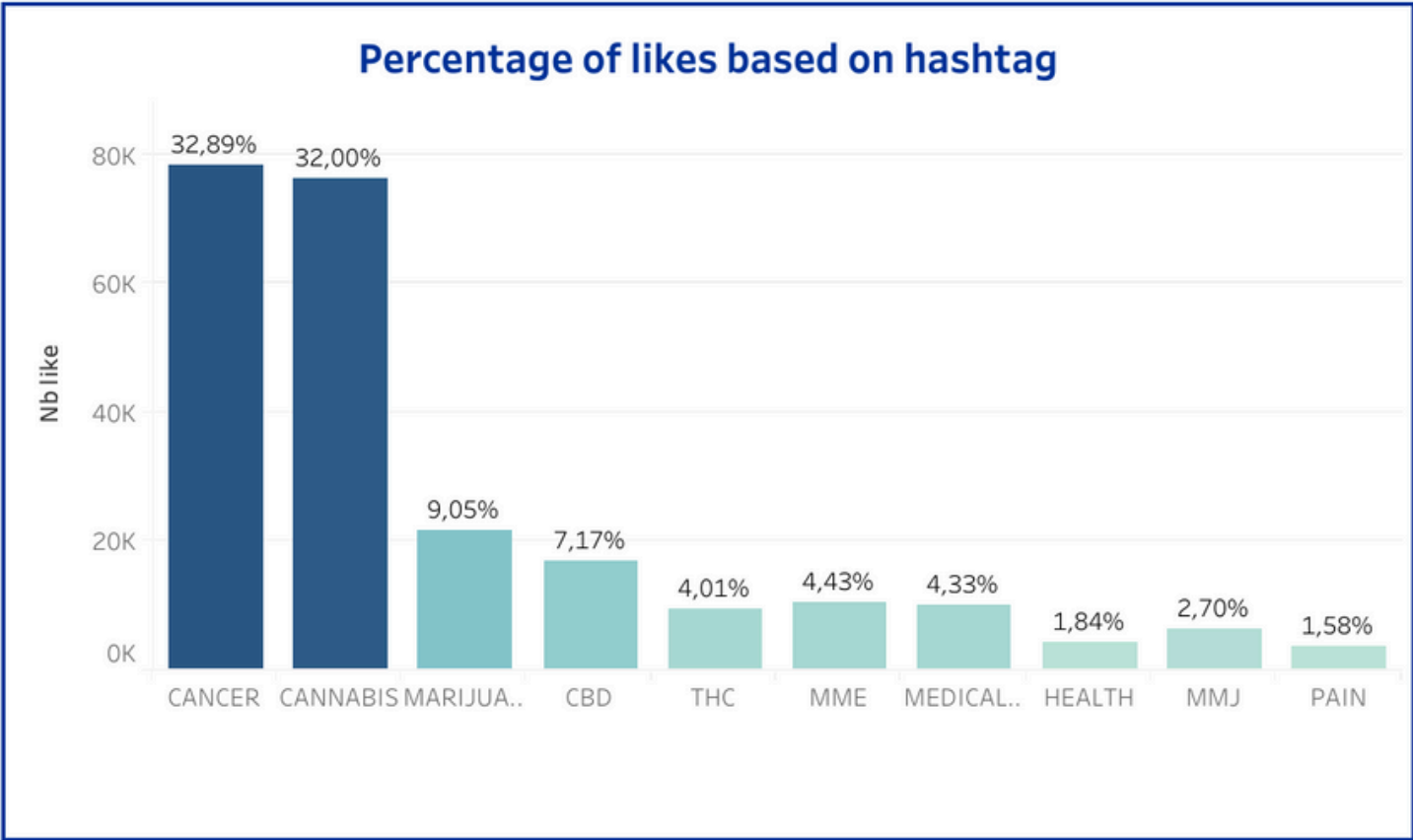


## **How to explore our Data ?**



# Initial Explorations

## NMI Analysis



Aggregate metrics	
Sum of number of likes	443 423
Sum of retweet counts	350 889
Sum of number of answers	27 651
Sum of citation counts	10 839

Frequency of hashtag appearances	
Hashtags Scin..	
CANCER	55 210
CANNABIS	52 540
MARIJUANA	18 723
CBD	13 817
THC	8 527
MME	7 422
MEDICALMARIJUANA	7 265
HEMP	5 333
HEMPOIL	3 864
HEALTH	3 578

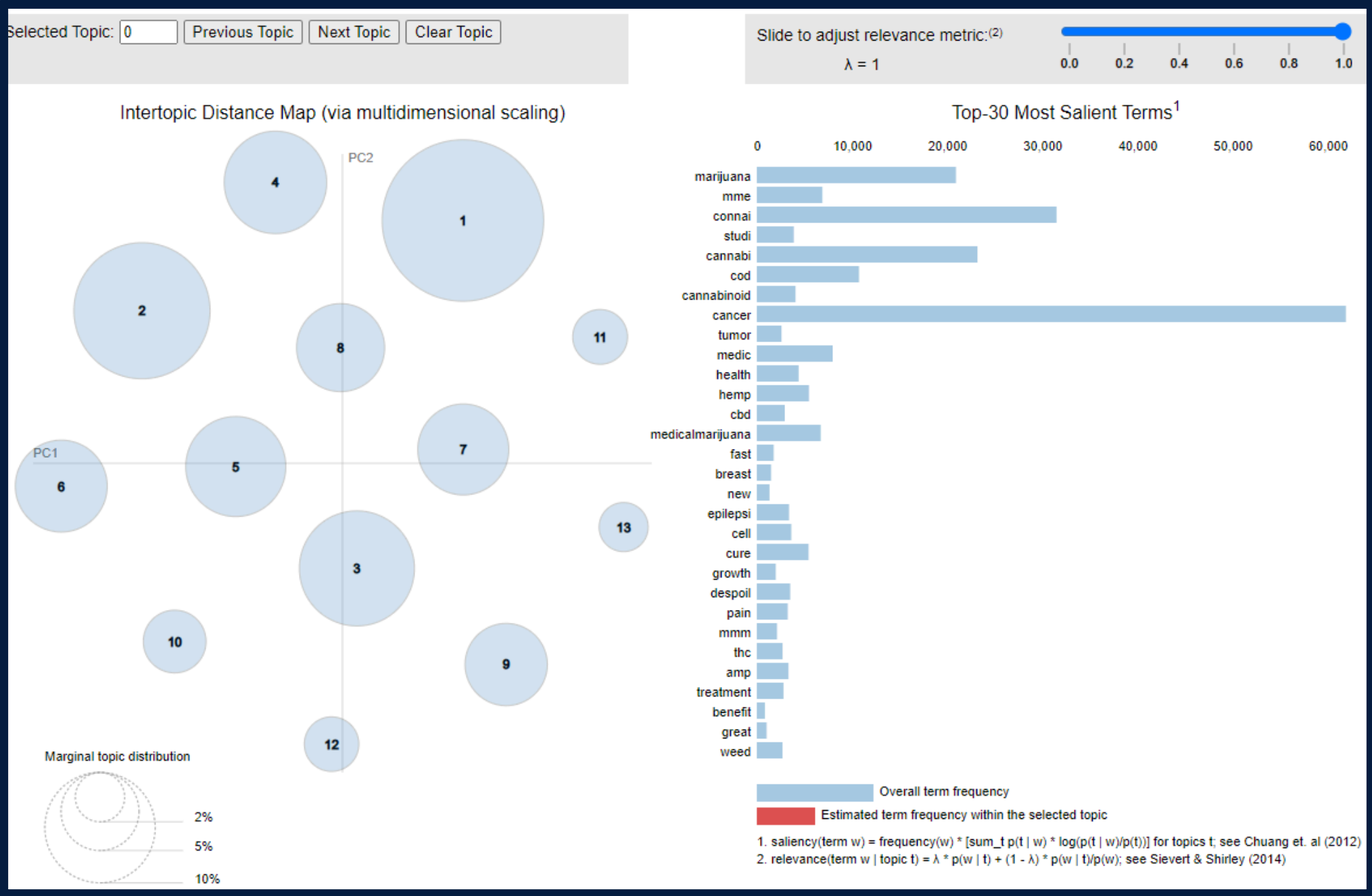
Top hashtag combinations	
Hashtags	
['#CANNABIS', '#CANCER']	11 946
['#CBD', '#HEALTH', '#CBDOIL', '#HEMP', '#CANNABIS', '#W..']	9 072
['#CANCER', '#CANNABIS']	4 960
['#THC', '#CANCER', '#POT', '#CANNABIS', '#WEED']	3 550
['#CBD', '#HEMP', '#CBDOIL', '#CANNABIS', '#HEALTH', '#W..']	3 200
['#CBD', '#CBDOIL', '#HEMP', '#CANNABIS', '#CANNABIDIO..']	3 200
['#THC', '#CBD', '#CANNABIS', '#WEEDOIL', '#MMJ', '#WIET..']	2 940
['#CANNABIS', '#CANCER', '#BREASTCANCER', '#BREASTCA..']	2 480
['#MME', '#MARIJUANA', '#CANNABIS', '#MEDICALMARIJU..']	2 430
['#WHYINTHEWORLD', '#CANNABIS', '#PTSD', '#CANCER', '..']	2 400

- visualizations on **Tableau**
- **#CANCER**  
**#CANNABIS** are “top hashtags”



## **What Are the Themes of Tweets Addressing INMs?**

# Latent Dirichlet Allocation - Topic Modeling



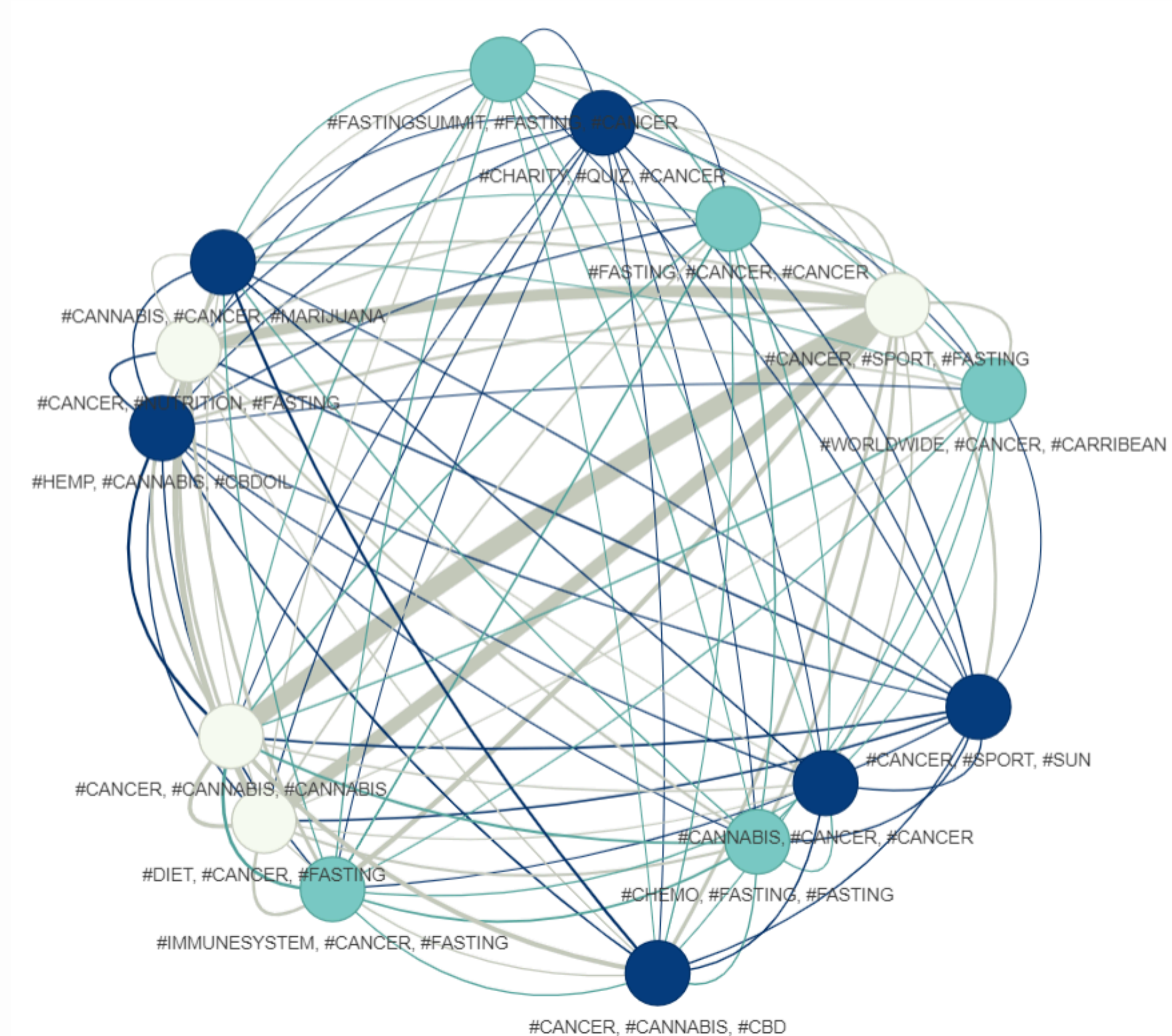
Label	Top Words
Treatment with Cannabis	[cancer, cannabi, connai, cell, marijuana, cure, studi, treatment, cannabinoid, kill]
Diet and Intermittent Fasting	[cancer, cannabi, breast, connai, breastcanc, analysi, extens, v, sport, wast]
Health Benefits of Cannabis	[cancer, health, daili, connai, cannabi, latest, benefit, cbd, hemp, ill]
Medical Marijuana Usage	[cancer, connai, cannabi, marijuana, leukaemia, medicalmarijuana, mmm, health, medicine, cod]
Research on Cancer Prevention	[cancer, connai, cannabi, amp, pain, fight, effect, growth, patient, cell]
Health and CBD Oil Usage	[cancer, connai, cb, cod, hemp, list, mmm, e, wietoli, weedoil]



**How Can We Explain the  
Interactions Between  
Users Within  
Communities?**



# Community Detection Within Hashtag Clusters



- **Links Between Hashtags in Tweets**
- **2 391 tweets** represented (1.5%)
- a node = a cluster = a similar group
- **K-means Clustering**
- Color represents community
- **Louvain's Algorithm**





**Is There a Link  
Between User's  
Sentiments and  
Controversy?**

# Sentiment Analysis with



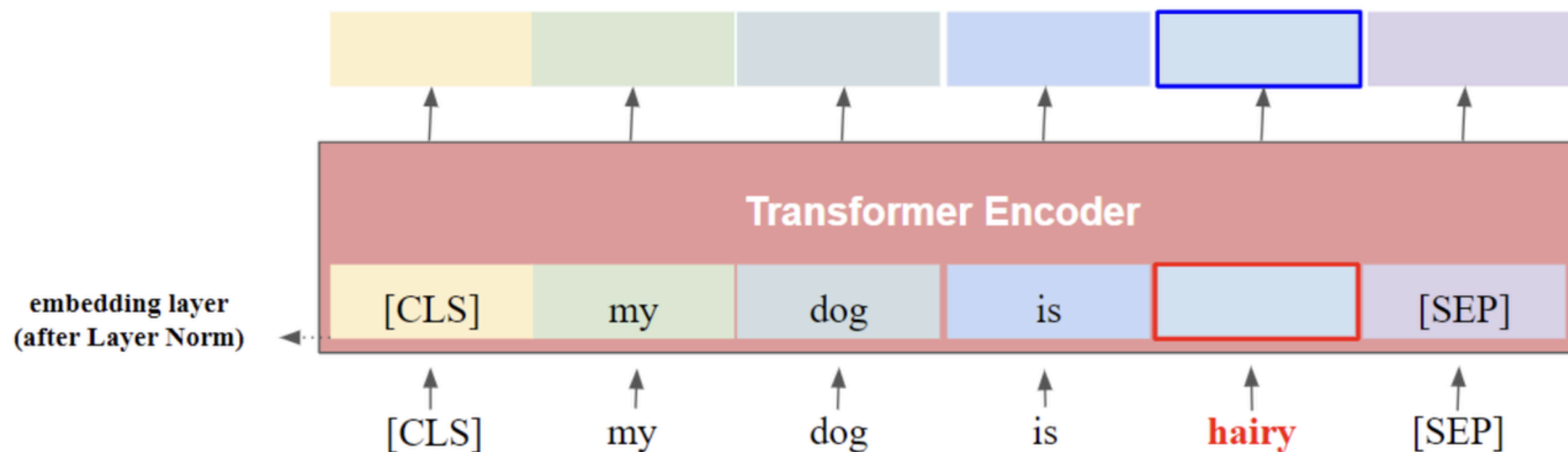
## Hugging Face

### RoBERTa

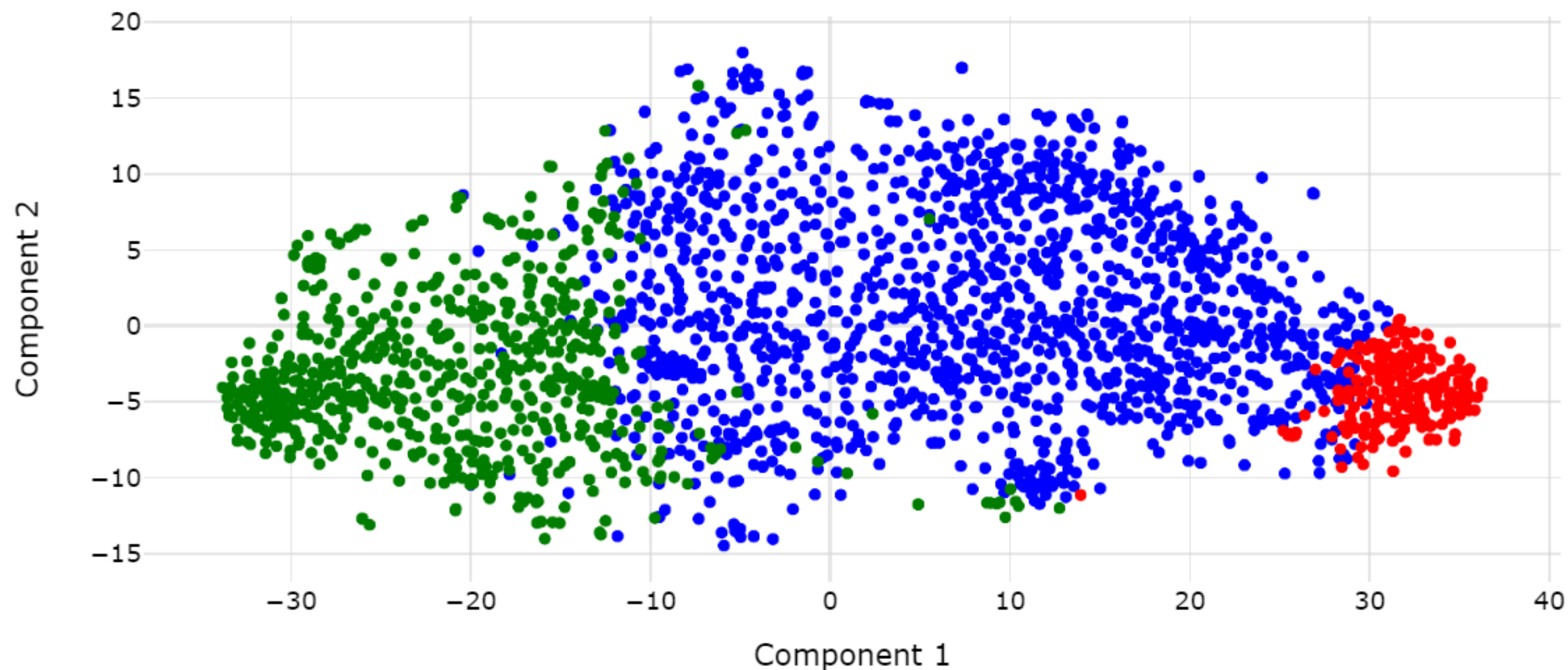
- Bidirectional Understanding
- Masked Language Modeling (MLM)
- Next Sentence Prediction (NSP)

How ?

∞ Meta



# t-SNE Visualization of Feature Spaces for Sentiment Analysis



## POSITIVE

- We found that almost 25%-35% of the #mice were completely cured of #cancer after administering #Cannabis.



- ## NEGATIVE
- While #Cancer is big business for some, it's a business that only exists because the #Cure is illegal. #Cannabis...
  - It doesn't matter to me if you smoke it or take drops, just think we are healthier, saving the environment, and tax payer money, Fk big pharma. #cannabis #cbdOil #hempoil #stress #ibs #cancer #anxiety #organic #facialcream #painrub #sleep #arthritis #fibromialgia #insomnia

- Medical Marijuana Helped Save This Child From #Cancer  
<https://t.co/My5dO4ksKR>  
#marijuana #cannabis  
#MME #Cancer http



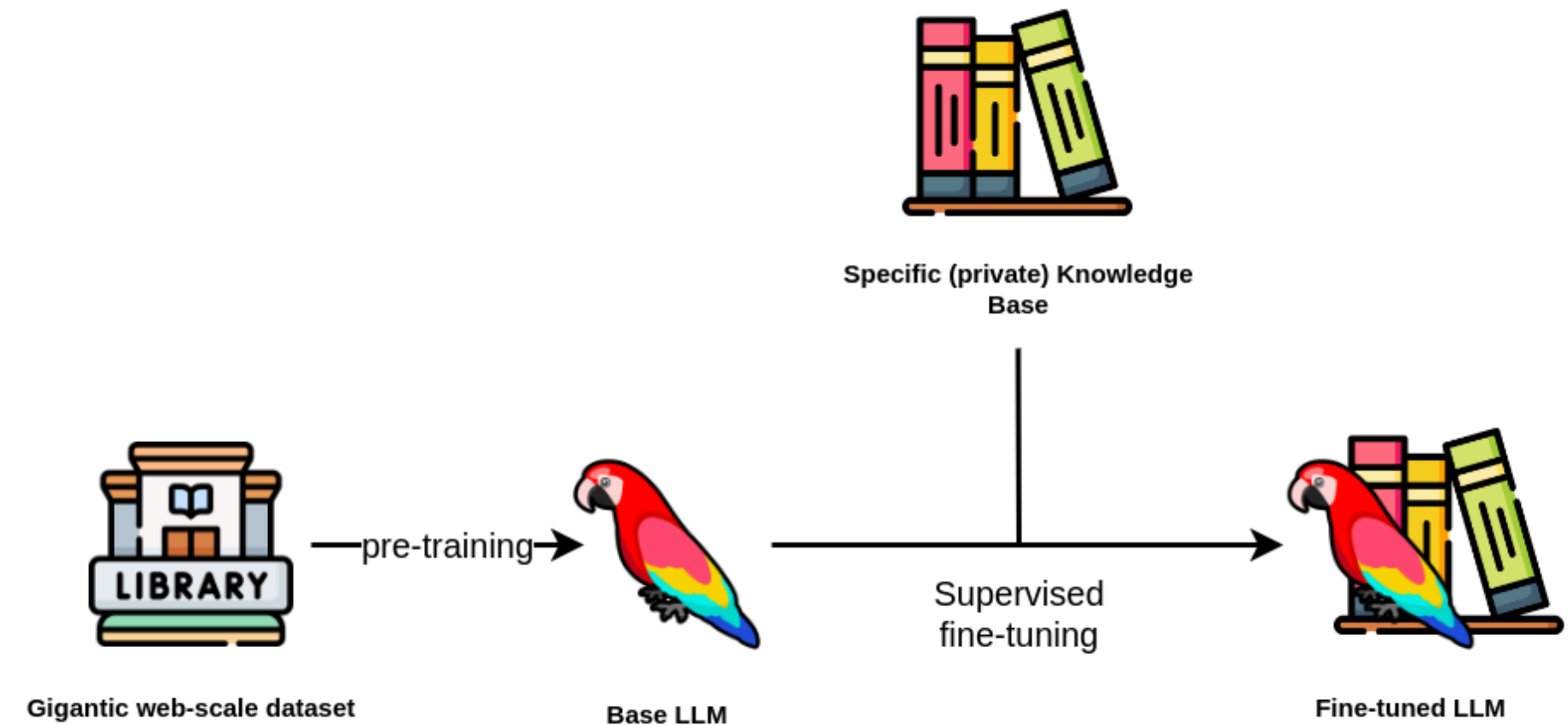
**Can We Classify  
Tweets Based on the  
Opinion Expressed?**



# Classification d'opinions 🤗 Hugging Face

**Pre-Trained model : google-bert/bert-base-uncased**

- Train : **80% (450 tweets)**
- Test : **20% (50 tweets)**
- **3 epochs**
- Labelisation : **PRO, ANTI, NEUTRAL**



**Class Imbalance:**  
Minority Anti!

**PRO:** Cancer patient: 'I had to become an outlaw or die' <https://t.co/iKhdQt4MDR> via @user #MME #Cancer #Cannabis <http>

**ANTI:** New research suggests that #cannabis extract can have a "dramatic effect" on brain #cancer. <http> #breakthetaboo



# Opinion Classification



Hugging Face

**Accuracy Globale : 86%**

Precision	VALUE
PRO	0.971
ANTI	0.500
NEUTRAL	0.643

**Problem for ANTI Class - Minority**



**1. DATA AUGMENTATION**

**2. LOSS to handle uneven classes**

- Weighted Categorical Cross-Entropy Loss
- Focal Loss



# **How to quantify Controversy?**

# Controversy Index

**Tweet characteristics :**

Retweets : 24

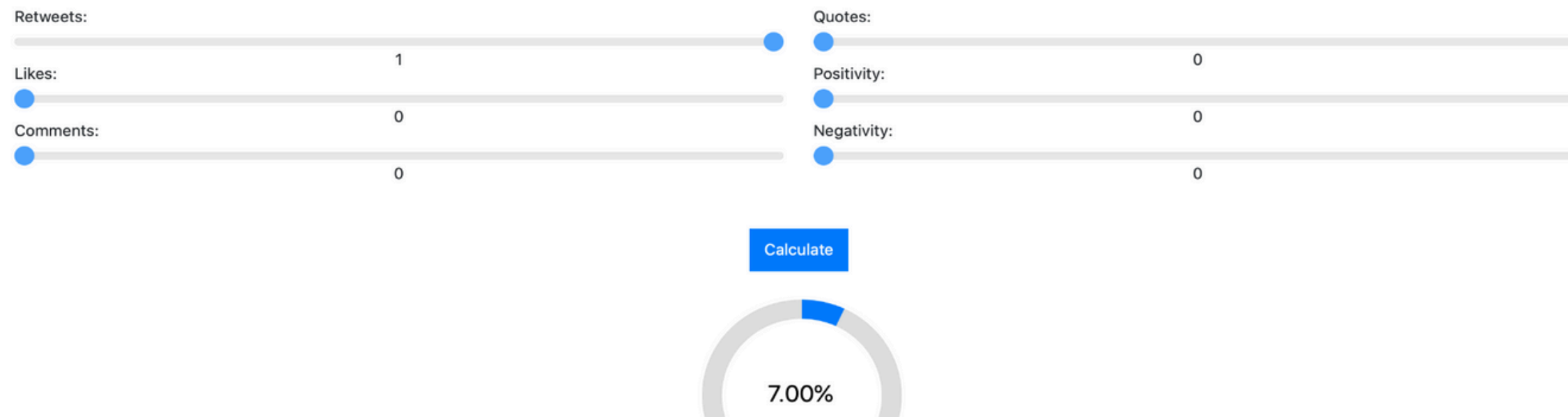
Likes : 13

Comments : N/A

Quotes : N/A

Positivity : 0.0445

Negativity : 0.0819



- Essential Metric
- **Multiple controversy factors are numerically normalized between 0 and 1**
- Weighted sum of factors chosen by the user.



**Where to  
Find Our  
Research?**

⌕ [http://advanse.lirmm.fr/template\\_container.php?  
template=AD/Controverse.php](http://advanse.lirmm.fr/template_container.php?template=AD/Controverse.php) ✕

# INM-EXPLAIN

[Home](#)[Dashbord](#)[Topic](#)[Sentiments](#)[Opinions](#)[Hashtags](#)[Controversy Index](#)[Our data](#)[Contact](#)

janssen  
Horizon



**Medical controversies**, present on social media, bringing to the fore heated debates, differences of opinion, contradictory interpretations of scientific evidences, etc. Some medical controversies are ethical issues with direct implications for public health. In this website, we describe the INM- Explain tool for exploring and quantifying these controversies, and apply it to the case of non-drug interventions. Down below, we can find the top 100 most used words in our dataset. This project was created as part of a guided research project in the first year of a Master's degree in Mathematics and Computer Science applied to Humanities and Social Sciences by five students : Alya ZOUZOU, Audric GIRON DIN, Maéva MAIO, Jonathan DUCKES, and Houria SAYAH, with the help of Samy Benslimane's Thesis. The supervision was provided by Sandra Bringay and Maximilien Servajean. This project is the result of a collaboration between the Janssen Foundation, the French National Centre for Scientific Research (CNRS), and the Laboratory of Informatics, Robotics, and Microelectronics of Montpellier (LIRMM).

🎓 Master 1 MIASHS    🔗 GIT    🏢 CNRS    🖥️ LIRMM    ⚙️ JANSEEN FONDATION

© 2024 INM-Explain. All Rights Reserved.



# Perspectives and Discussions

- **Improvement of Descriptive Visualizations:** Add interactions to navigate through subsets of tweets (keywords, number of retweets, etc.).
- **Refining Sentiment Analysis:** Link themes to the tweets of each group in the TSNE visualization.
- **Temporal Analysis :** Explore controversial topics over time.
- **Case Study and Perception of NPIs:** Generalize the INM-Explain tool to other controversial topics and social media platforms (Threads, TikTok).



# CONCLUSION



- **Cannabis** : Focus on cannabis and its derivatives, central role, and demand for legal recognition.
- **Sentiment Analysis** : Variety of perceptions, mixed reception of alternative therapies.
- **Controversy**: Need for informed discussions to guide public health policies.
- **Communication**: Importance of scientific communication and the engagement of health professionals.



# MERCI !



Janssen  
Horizon

